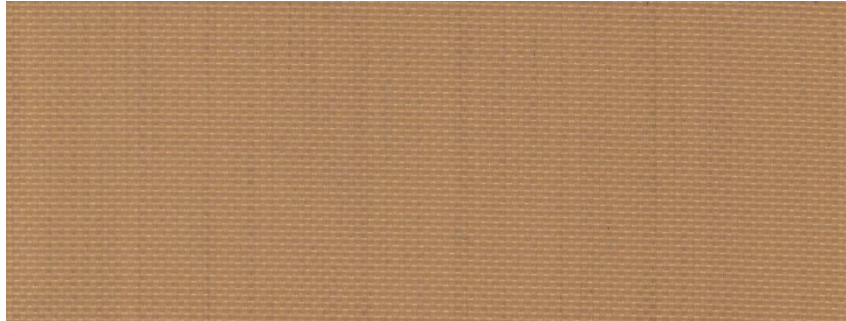


# 04614 K



| Product             | Product category | Coating |
|---------------------|------------------|---------|
| PTFE KEVLAR® FABRIC | KEVLAR® SERIE    | PTFE    |

| Properties  | Metric     |                   | Imperial    |            |
|---|------------|-------------------|-------------|------------|
| Standard width(s)<br><i>Please ask for other widths</i> | 1600, 2200 | mm                | 63, 86.7    | inches     |
| Thickness   | 0,43       | mm                | 0.0169      | inches     |
| Weight  | 680        | gr/m <sup>2</sup> | 20.06       | oz/sq yd   |
| PTFE content  | 57         | %                 | 57          | %          |
| Tensile strength  | 2200       | N/5 cm            | 251         | Ibs/inches |
| Temperature resistance                                  | -73 to 220 | °C                | -100 to 428 | °F         |

Excellent for use in exception ally tough mechanical applications. Superior characteristics of PTFE / Kevlar® products result in increased productivity, longer life time and lower operating costs. Applications may include; freezing of food products, pressing plywood and chipboard, conveyor belting for industrial processing. The product can be used in direct contact with food.

The product does not contain banned substances as described in RoHS directive and will not affect RoHS compliance.



Note: Nominal thickness, weight and tensile strength values are typical and are not intended as a specification minimum. Weight Tolerance g/m<sup>2</sup> = ±%5  
 All technical data are based on average values. These values are not intended for use in preparing specifications. Technical information contained herein are based on test results FIBERFLON believes to be reliable, but they are not to be construed in any manner as warranties expressed.  
 All data is subject to change without notice.